

Mono

# XTM6-60 Shinetime Solar



## 15.58%

MAX MODULE EFFICIENCY

## 255W

MAX POWER OUTPUT

## 10 YEAR

PRODUCT WARRANTY

## 25 YEAR

LINEAR POWER WARRANTY



### Positive tolerance

Guaranteed power output positive tolerance from 0 to 3%.



### Smart auto-recognition of weak light performance

Smart light auto-recognition under the condition of low irradiance and hazy light (mornings, evenings and cloudy days).



### Steady resistance to strong hailstone, wind and snow loads

Special frame construction certified to ensure high wind loads (2400 Pa), snow loads (5400 Pa) and hailstone (40mm/4.5m/s).



### Certified manufacturing facility

Manufacturing facility certified by TÜV Rheinland to ISO 9001:2008, ISO14001:2004.

### CERTIFICATIONS



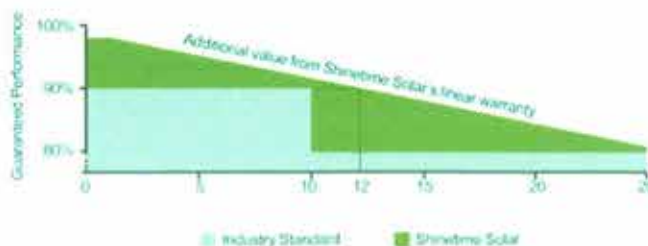
ZHEJIANG XIANGTAI PHOTOVOLTAIC TECHNOLOGY CO., LTD.  
www.shinetimesolar.com



NEW

### LINEAR PERFORMANCE WARRANTY

10 Year Product Warranty - 25 Year Linear Power Warranty

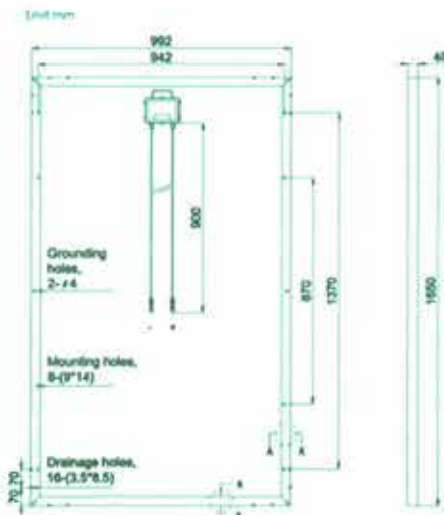


Gsm: +385 91 1414 257  
e-mail: mdblazi@gmail.com  
Gsm: +385 98 1617 164  
e-mail: zabava@vinter.hr

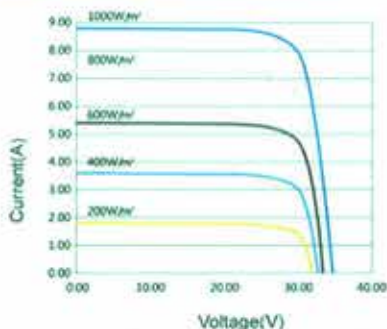
**SUNČANE  
ELEKTRANE**  
PRODAJA • MONTAŽA • KONZALTING  
WWW.PAUK-SOLARNEELEKTRANE.HR

# XTM6-60 **Shinetime Solar**

## DIMENSIONS OF PV MODULE XTM6-60



## I-V CURVES OF PV MODULE XTM6-60



Average efficiency reduction of 4.5% at 200w/m<sup>2</sup> according to EN 60904-1

Version No.

XT.M6.60.EU.EN.20120218.V001

ELECTRICAL DATA @ STC	XTM6-60-240	XTM6-60-245	XTM6-60-250	XTM6-60-255
Peak Power Watts-P <sub>max</sub> (Wp)	240	245	250	255
Nominal Power Voltage-V <sub>nom</sub> (V)	30.0	30.3	30.4	30.6
Nominal Power Current-I <sub>nom</sub> (A)	7.92	8.09	8.22	8.33
Open-Circuit Voltage-V <sub>oc</sub> (V)	37.80	38.00	38.20	38.30
Short Circuit Current-I <sub>sc</sub> (A)	8.35	8.43	8.50	8.58
Module Efficiency η <sub>m</sub> (%)	14.66%	14.97%	15.27%	15.55%

Values at Standard Test Conditions STC(Air Mass AM 1.5, Irradiance 1000w/m<sup>2</sup>, Cell Temperature 25°C)

ELECTRICAL DATA @ NOCT	XTM6-60-240	XTM6-60-245	XTM6-60-250	XTM6-60-255
Maximum Power-P <sub>max</sub> (W)	174	176	181	185
Maximum Power Voltage-V <sub>m</sub> (V)	27.4	27.5	27.6	27.7
Maximum Power Current-I <sub>m</sub> (A)	6.38	6.46	6.58	6.68
Open Circuit Voltage-V <sub>oc</sub> (V)	35.0	35.1	35.1	35.2
Short Circuit Current-I <sub>sc</sub> (A)	6.81	6.92	7.02	7.13

NOCT Irradiance at 800w/m<sup>2</sup>, Ambient Temperature 20°C, Wind Speed 1m/s

## MECHANICAL DATA

Solar cells	Monocrystalline 156X156mm (6 inches)
Cell orientation	60 cells(6X10)
Module dimension	1650X992X40mm
Weight	19.5kg
Glass	High transparency and low-iron tempered solar glass 3.2mm(0.13inches)
Frame	Silver colour anodized aluminium alloy
Junction Box	IP 65 rated
Cables	Photovoltaic Technology cable 4.0mm <sup>2</sup> (0.006 inches <sup>2</sup> ), 900mm(35.4 inches)
Connector	MC4 Compatible / IP65 or MC4 Original / IP67

## TEMPERATURE RATINGS

Nominal Operating Cell Temperature(NOCT)	45 ± 1°C
Temperature Coefficient of P <sub>max</sub>	-0.469%/K
Temperature Coefficient of V <sub>oc</sub>	-0.328%/K
Temperature Coefficient of I <sub>sc</sub>	0.035%/K

## OPERATING CONDITIONS

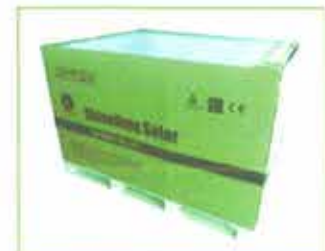
Maximum System Voltage	1000V <sub>DC</sub>
Max Series Fuse Rating	15A
Operational Temperature	-40°C ~ +85°C
Max. Static Load, Front	5400Pa
Max. Static Load, Back	2400Pa
Max. Hailstone Impact	40mm / 4.5m/s

## WARRANTY

10 year workmanship warranty  
25 year linear performance warranty (12 year 90% power output, 25 year 80% power output)

## PACKAGING CONFIGURATION

25pcs per ctn, 2pcs per box, (2ctns+2boxes) per pif, 14 pifs (756 pcs) per 40 HQ



Gsm: +385 91 1414 257  
e-mail: mdblazi@gmail.com  
Gsm: +385 98 1617 164  
e-mail: zabava@vinter.hr

**SUNČANE  
ELEKTRANE**  
PRODAJA • MONTAŽA • KONZALTING  
WWW.PAUK-SOLARNEELEKTRANE.HR